



Orchard Road, Lewes

- Semi-detached family home
- Popular South Malling area of Lewes
- Off-road parking
- Detached garage
- Front and rear gardens
- Close to schools and amenities
- Light and airy accommodation
- Vendors suited



Front Door

Hallway

Shower Room

Living Room  
24 x 10'1

Kitchen  
11'7 x 7'5

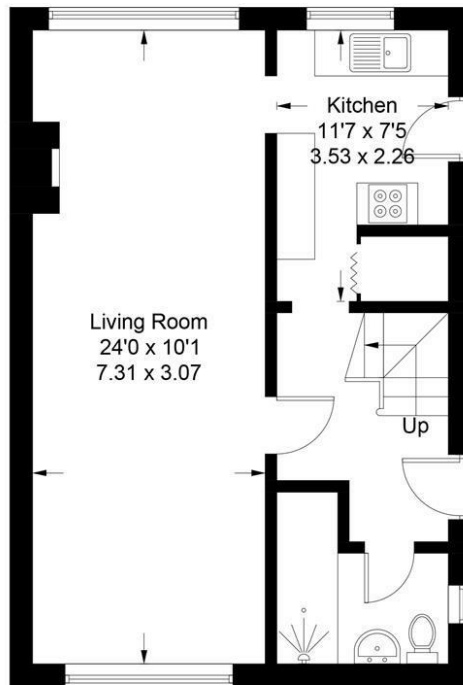
Second Floor Landing

Bedroom 1  
18 x 11'11

Bedroom 2  
15'1 x 6'1

WC

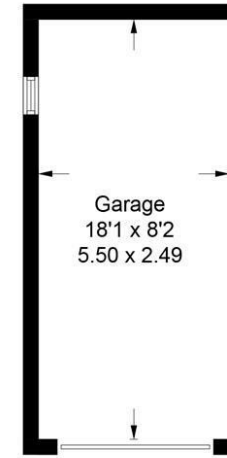




**Ground Floor**



**First Floor**



(Not Shown In Actual Location / Orientation)

Approximate Gross Internal Area = 81.5 sq m / 877 sq ft  
Garage = 13.7 sq m / 147 sq ft  
Total = 95.2 sq m / 1024 sq ft

Illustration for identification purposes only, measurements are approximate, not to scale. floorplansUsketch.com © (ID952459)



t: 01273 477377

e: sales@lewesestates.co.uk

Every care is taken in preparing our sales particulars and they are usually verified by the vendor. We do not guarantee appliances, electrical fittings, plumbing, etc; you must satisfy yourself that they operate correctly. Room sizes are approximate. Please do not use them to buy carpets or furniture. We cannot verify the tenure as we do not have access to the legal title. We cannot guarantee boundaries or rights of way. You must take advice of your legal representative.



draft



52 High Street, Lewes, East Sussex, BN7 1XE t: 01273 477377 e: [sales@lewesestates.co.uk](mailto:sales@lewesestates.co.uk) [www.lewesestates.co.uk](http://www.lewesestates.co.uk)